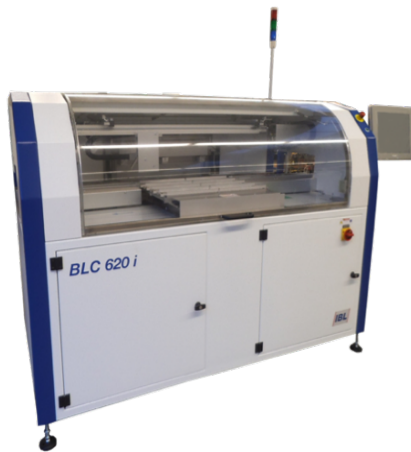
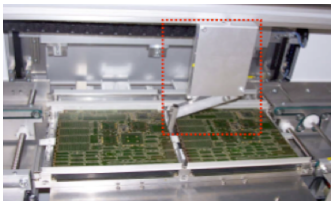


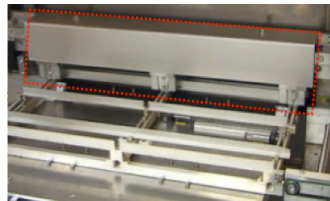
Premium Inline Reflow Vapour Phase Soldering Oven



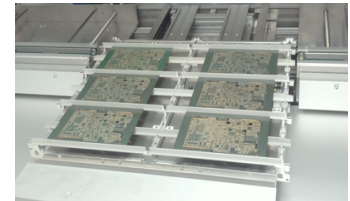
The BLC inline model is an environmentally friendly and flexible system for high quality soldering. The most complex soldering applications can be easily mastered with this machine. A high mix of large and small components can simultaneously get soldered without overheating any of them. This machine can be fully integrated into a production line and if necessary also be used in the batch mode. The Intelligent Profiling System gives the user full control of temperature rise to reach the best soldering profiles. Together with the unique patented Soft Vapour Phase there is no fear of exceeding temperature increase rates of components. Their outstanding low energy consumption and exhaust air volume compared to other soldering systems result in even lower running costs. Excellent heat transfer in an inert oxygen free atmosphere without the need of costly nitrogen. The two-chamber system with a large user-friendly touch display makes this machine easy to set up and use. Soldering is possible regardless of assembly weight with the same profile.



Automatic board handling



Automatic lane adjustment



Loaded Work Piece Carrier

Features:

- Comfortable 15" Touch-Screen mounted on a swiveling arm
- Integrated PC, allows permanent data collection and professional data management
- Permanent data collection
- Unlimited program memory with a large amount of sample programs
- Network capable
- Password protected operation levels
- Energy management system
- Intelligent Profiling System (IPS) for high-end thermal profile control
- Buffer in the loading and unloading areas
- Automatic loading and unloading Work Piece Carrier
- Signal light tower
- Patented vibration and maintenance free transport system
- Two chamber design and medium recovery results in a very low fluid consumption
- Fluid level control and automatic filtering
- Integrated cooling fans
- Minimal maintenance and wear due to all moving parts mounted outside of the process chamber
- Easy access to solder chamber for cleaning and maintenance purposes
- Observation window into the solder chamber
- Exhaust connection
- Cool handling – transport system in cool area

Options:

Process extensions

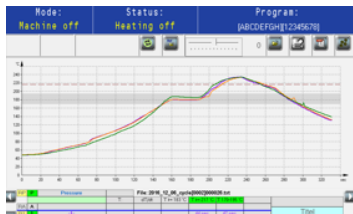
- Infrared pre-heating
- Variety of options for pcb cooling
- Patented Rapid Cooling System (RCS)
- Up to 3 additional temperature measurement channels
- Multi-Level Mode for rapid switching between different soldering heights
- Nitrogen flooding of the cooling and process chamber

Software extensions

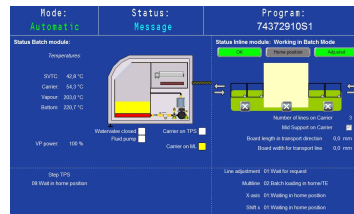
- Online Temperature Recording Software (TRS) for data analysis and storage including alarm and event log
- Pilot mode, measurement channel for easy temperature-controlled soldering and setting up of profiles
- Heating power monitoring
- Various traceability extensions, for automated processes and tracking, ready for Industry 4.0

Hardware extensions

- Automatic adjustment of transport lane width and work piece carrier
- Larger transport width
- Batch carrier and stainless-steel grid
- Adapter for double sided boards on batch carrier
- Heavy Duty "HD" model for loads up to 14 kg
- Exhaust system extensions
- UPS – Uninterruptable Power Supply
- ReSy – a device for repair of QFPs BGAs
- 2nd Emergency Stop
- Storage compartment for carrier
- Integration of a bypass system
- Chiller for inside or outside use with automatic standby control



Real time profile monitoring



Machine status monitor



Scanner option

Technical data:

	BLC620i	BLC820i
Width	2020 mm (75.73")	2220mm (87.40")
Depth	2490 mm (98.03")	
Height	1470 mm (57.87")	
Weight	920 kg (2028.25 lbs)	1070 kg (2358.95 lbs)
Max. PCB size inline modus	630 x 400 x 55 mm (24.80 x 15.75 x 2.17")	
Max. PCB size batch modus	650 x 540 x 80mm (25.59 x 21.26 x 3.15")	850 x 540 x 80mm (33.46 x 21.26 x 3.15")
Max. load on single carrier	7 kg (15.43 lbs)	
Liquid agent filling	20 kg (40.10 lbs)	25 kg (55.12")
Water connection	1/2" / 2,5 – 5 bar	
Max. heating capacity	7,8 kW	10,4kW
Average power consumption	3,2 kW/h	3,6 kW/h
Power supply	400 / 230 VAC, 50/60Hz	
Main fuse	20A „gI“ or „C“	32A „gI“ or „C“

Specifications subject to change without prior notice

D1E11-BLC620i/820i -E-210719