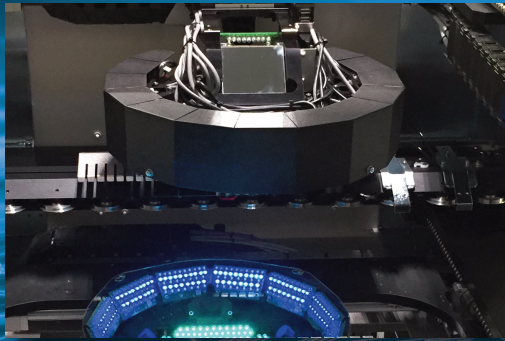


AOI & SPI solutions  
you can count on.



## LX-1000 AOI

In-line large area optical inspection

Nordson YESTECH's advanced multi-purpose, large area, double-sided inspection system offers high speed PCB inspection with exceptional defect coverage. With dual sided top-down and bottom up viewing sensors, the LX-1000 inspects solder joints and verifies correct part assembly, enabling users to improve quality and enhance yields.

Advanced 2D and 3D sensors and newly available image processing technology integrates several techniques, including fringe projection, color inspection, normalized correlation and rule-based algorithms, to provide complete inspection metrology with an unmatched low false failure rate.

Programming the LX-1000 is fast and intuitive. Operators typically take less than 60 minutes to create a complete inspection program including solder inspection. The LX-1000 utilizes a standard package library to simplify training and ensure program portability across manufacturing lines.

The LX-1000 is highly effective for selective solder, post wave and connector inspections. Off-line programming maximizes machine utilization and real-time SPC monitoring provides a valuable yield enhancement solution.

### Features:

- Single or dual sided imaging with full travel imaging sensors
- 630mm x 630mm large inspection area
- Optional 3D and/or 2D automated inspection
- Up to 100 mm clearance
- Heavy duty conveyor options for samples to 15kg
- High defect coverage / low false failure
- MES / Industry 4.0 compatible

### Automated Inspection for:

- THT component and solder defects
- SMT component presence and position
- Wave / Selective solder joint inspection
- Correct part / polarity
- Configurable for automated conformal coat inspection (ACI)

# LX-1000 AOI Large Area Dual-Sided Optical inspection

## Specifications

### Model LX-1000

Multi-function system with top-down and bottom up viewing with optional 3D inspection

### Specifications

Throughput:	Up to 30 sq. in./sec. > 1.5 million components per hour
630mm x 630mm)	
Clearance:	4" (100mm) top size and 2" (50mm) bottom
Minimum Component Size:	01005 with high magnification option
False Calls:	<500 PPM (<0.05% typical)
Defects Detected:	Part: position, missing, wrong, polarity, skew, tombstone Lead: bent, lifted, bridging Solder: open, insufficient, short, solder balls

### Software

Algorithms:	Color, OCV, OCR, barcode recognition, both image and rule-based algorithms. Optional 3D
Data Requirements:	ASCII Text, X-Y position, part #, ref. #, polarity
CAD Translation Package:	Aegis, Fabmaster, YESTECH CAD Utility
Programming Skill Level:	Technician or operator
Operating System:	Windows 10
Off-line Software:	Optional - Rework, Review and Program Creation Basic
SPC Software:	SPC included. Optional: Real-time local and remote monitoring of first pass yield, defect trends, and machine utilization.
Data Outputs:	Text, SQL, ODBC, MS Access, XML

### Hardware

Material Handling:	SMEMA, dual direction auto width conveyor, pass / fail signals, board clamping
Lighting:	Proprietary Fusion Lighting™ multiangle LED
Imager:	Up to 15 megapixel color camera sensor 12 or 8 micron pixel size

### Facilities

Power:	110-220VAC, 50/60 Hz, 15 amps
Air input:	60 PSI min., 1/4" air hose, 2 CFM
Footprint:	60" x 60" x 60" (2038mm x 1321mm x 1524mm)
Weight:	950 lbs (500 kg)
Machine Installation:	< 1 hour

### Nordson YESTECH

USA Headquarters:  
2747 Loker Ave. West  
Carlsbad, CA USA 92010  
+1.760.918.8471 **Phone**  
+1.760.918.8472 **Fax**

China:  
#137 Guoshoujing Road  
Zhangjiang Hi-Tech Park  
Pudong,  
Shanghai 201203, P.R.China  
+86 21 3866 9166 **Phone**  
+86 21 3866 9199 **Fax**

SE Asia:  
2 Corporation Road  
#03-11/12  
Corporation Place 618494  
Singapore  
+65 6552 7533 **Phone**  
+65 6552 7116 **Fax**

Europe:  
25 Faraday Road  
Rabans Lane Industrial Area  
Aylesbury  
Buckinghamshire  
HP19 8RY  
+44 (0) 1296 317800 **Phone**  
+44 (0) 1296 317801 **Fax**

Japan:  
Tohshin Bldg. 2F  
1-5-21 Katsushima Shinagawa  
Tokyo, 140-0012  
+81 3 5762 2801 **Phone**  
+81 3 5762 2802 **Fax**



**Nordson YESTECH**  
USA Headquarters  
2747 Loker Ave. West  
Carlsbad, CA USA 92010

+1.760.918.8471 **Phone**  
+1.760.918.8472 **Fax**  
sales@nordsonyestech.com  
www.nordsonyestech.com

Copyright © 2020 Nordson YESTECH

